

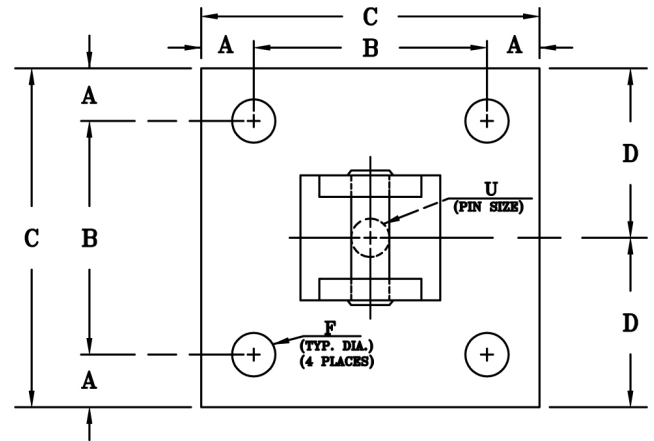
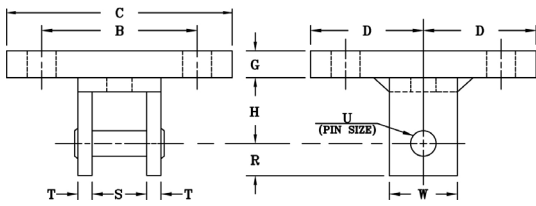


## FIG. 73

## CONCRETE CLEVIS PLATE

[www.pipingtech.com/fig73](http://www.pipingtech.com/fig73)

- MATERIAL:** Carbon steel
- SIZE:** Rod sizes 3/8" thru 2"
- FINISH:** Black or galvanized; furnished black unless otherwise specified.
- SERVICE:** Attachment for concrete ceiling.
- ORDERING:** Specify figure number, rod size, description and finish.



ROD SIZE	MAX. RECOM. LOAD (lb.)	A	B	C	D	F	G	H	R	S	T	U	W	APPROX. WEIGHT (lb. per each)
3/8	730	1	8	10	5	9/16	3/8	2	7/8	1 1/4	1/4	1/2	2	11.8
1/2	1,350	1	8	10	5	9/16	3/8	2	7/8	1 1/4	1/4	5/8	2	11.9
5/8	2,160	1	8	10	5	9/16	1/2	2	1	1 1/4	1/4	3/4	2	15.7
3/4	3,230	1	8	10	5	11/16	1/2	2	1 1/8	1 1/2	3/8	7/8	2 1/2	16.9
7/8	4,480	1	8	10	5	11/16	1/2	3	1 1/4	2	3/8	1	2 1/2	18.1
1	5,900	2	8	12	6	13/16	3/4	3	1 1/2	2	1/2	1 1/8	3	36.9
1 1/4	9,500	2	8	12	6	15/16	3/4	3	2	2 1/2	5/8	1 3/8	4	40.9
1 1/2	13,800	2	8	12	6	1 1/8	1	4	2 1/2	3	3/4	1 5/8	5	59.8
1 3/4	18,600	2	10	14	7	1 3/8	1 1/4	5	2 3/4	3 3/4	3/4	1 7/8	5	93.6
2	20,700	2	10	14	7	1 3/8	1 1/4	5	3 1/4	3 3/4	3/4	2 1/4	6	100.0

SCOMPONENTS03.XLS-07/01/09

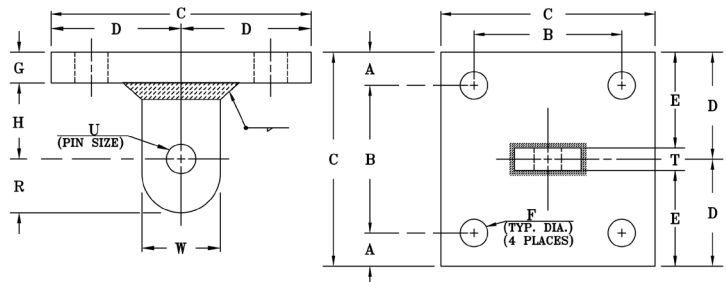
SUPPORT ASSEMBLY COMPONENTS

## FIG. 74

## CONCRETE SINGLE LUG PLATE

[www.pipingtech.com/fig74](http://www.pipingtech.com/fig74)

- MATERIAL:** Carbon steel
- SIZE:** Rod sizes 1/2" thru 2"
- FINISH:** Black or galvanized; furnished black unless otherwise specified.
- SERVICE:** Structural attachment for concrete ceiling. Lug is used in conjunction with Fig. 95 (Forged Steel Clevis).
- ORDERING:** Specify figure number, rod size, description and finish.



ROD SIZE	MAX. RECOM. LOAD (lb.)	A	B	C	D	E	F	G	H	R	T	U	W	APPROX. WEIGHT (lb. per each)
1/2	1,350	1	8	10	5	4 7/8	9/16	3/8	1 1/2	1 1/4	1/4	5/8	2 1/2	11.1
5/8	2,160	1	8	10	5	4 7/8	9/16	1/2	1 1/2	1 1/4	1/4	3/4	2 1/2	14.6
3/4	3,230	1	8	10	5	4 13/16	11/16	1/2	1 1/2	1 1/4	3/8	7/8	2 1/2	14.8
7/8	4,480	1	8	10	5	4 13/16	11/16	3/4	2	1 1/4	3/8	1	2 1/2	22.0
1	5,900	2	8	12	6	5 3/4	13/16	3/4	2	1 1/2	1/2	1 1/8	3	31.9
1 1/4	9,500	2	8	12	6	5 11/16	15/16	1	3	2	5/8	1 3/8	4	43.8
1 1/2	13,800	2	8	12	6	5 5/8	1 1/8	1	3	2 1/2	3/4	1 5/8	5	45.6
1 3/4	18,600	2	8	12	6	5 5/8	1 3/8	1 1/4	3	2 1/2	3/4	1 7/8	5	55.7
2	24,600	2	8	12	6	5 5/8	1 3/8	1 1/4	4	3	3/4	2 1/4	6	58.2

SCOMPONENTS03.XLS-04/22/17